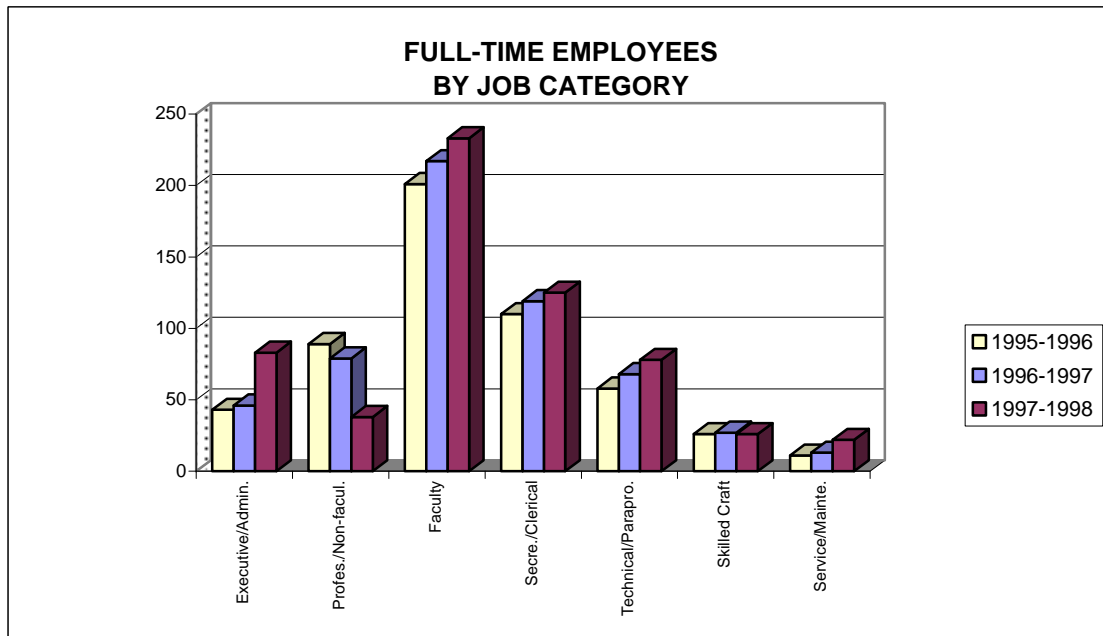


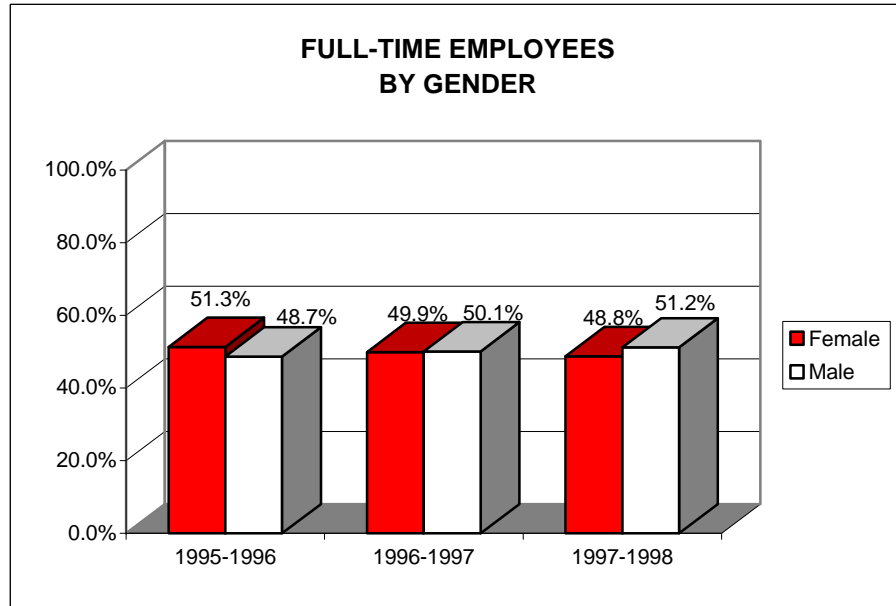
## FULL-TIME EMPLOYEES BY JOB CATEGORY

	1995-1996	1996-1997	1997-1998
<b>EXECUTIVE/ADMINISTRATIVE</b>	43	46	83
<b>PROFESSIONAL/NON-FACULTY</b>	89	79	38
<b>FACULTY</b>	201	217	233
<b>SECRETARIAL/CLERICAL</b>	110	119	125
<b>TECHNICAL/PARAPROFESSIONAL</b>	58	68	78
<b>SKILLED CRAFT</b>	26	27	26
<b>SERVICE/MAINTENANCE</b>	11	13	22
<b>TOTAL</b>	538	569	605



## FULL-TIME EMPLOYEES BY GENDER

	1995-1996		1996-1997		1997-1998	
Female	276	51.3%	284	49.9%	295	48.8%
Male	262	48.7%	285	50.1%	310	51.2%
<b>TOTAL</b>	<b>538</b>		<b>569</b>		<b>605</b>	

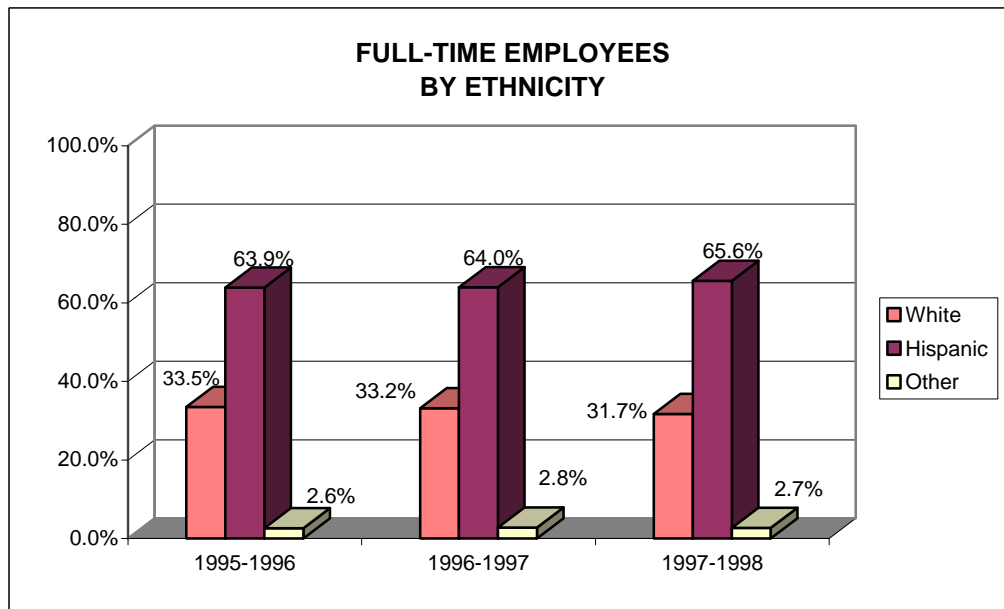


**FULL-TIME EMPLOYEES  
BY JOB CATEGORY AND GENDER**

	1995-1996	1996-1997	1997-1998
<b>EXECUTIVE/ADMINISTRATIVE</b>			
Female	15	17	40
Male	28	29	43
TOTAL	43	46	83
<b>PROFESSIONAL/NON-FACULTY</b>			
Female	54	46	21
Male	35	33	17
TOTAL	89	79	38
<b>FACULTY</b>			
Female	90	95	99
Male	111	122	134
TOTAL	201	217	233
<b>SECRETARIAL/CLERICAL</b>			
Female	90	96	100
Male	20	23	25
TOTAL	110	119	125
<b>TECHNICAL/PARAPROFESSIONAL</b>			
Female	25	29	34
Male	33	39	44
TOTAL	58	68	78
<b>SKILLED CRAFT</b>			
Female	1	0	0
Male	25	27	26
TOTAL	26	27	26
<b>SERVICE/MAINTENANCE</b>			
Female	1	1	1
Male	10	12	21
TOTAL	11	13	22

## FULL-TIME EMPLOYEES BY ETHNICITY

	1995-1996		1996-1997		1997-1998	
White, non-Hispanic	180	33.5%	189	33.2%	192	31.7%
Black	3	0.6%	3	0.5%	4	0.7%
Hispanic	344	63.9%	364	64.0%	397	65.6%
Asian	11	2.0%	13	2.3%	9	1.5%
Non-resident	0	0.0%	0	0.0%	3	0.5%
<b>TOTAL</b>	<b>538</b>		<b>569</b>		<b>605</b>	



**FULL-TIME EMPLOYEES  
BY JOB CATEGORY AND ETHNICITY**

	1995-1996	1996-1997	1997-1998
<b>EXECUTIVE/ADMINISTRATIVE</b>			
White, non-Hispanic	21	20	30
Black	0	0	0
Hispanic	22	26	52
Asian	0	0	1
Non-resident	0	0	0
<b>TOTAL</b>	<b>43</b>	<b>46</b>	<b>83</b>
<b>PROFESSIONAL/NON-FACULTY</b>			
White, non-Hispanic	25	21	12
Black	0	0	0
Hispanic	62	55	26
Asian	2	3	0
Non-resident	0	0	0
<b>TOTAL</b>	<b>89</b>	<b>79</b>	<b>38</b>
<b>FACULTY</b>			
White, non-Hispanic	120	129	136
Black	3	3	3
Hispanic	70	75	83
Asian	8	10	8
Non-resident	0	0	3
<b>TOTAL</b>	<b>201</b>	<b>217</b>	<b>233</b>
<b>SECRETARIAL/CLERICAL</b>			
White, non-Hispanic	2	5	5
Black	0	0	0
Hispanic	107	114	120
Asian	1	0	0
Non-resident	0	0	0
<b>TOTAL</b>	<b>110</b>	<b>119</b>	<b>125</b>
<b>TECHNICAL/PARAPROFESSIONAL</b>			
White, non-Hispanic	10	12	7
Black	0	0	1
Hispanic	48	56	70
Asian	0	0	0
Non-resident	0	0	0
<b>TOTAL</b>	<b>58</b>	<b>68</b>	<b>78</b>
<b>SKILLED CRAFT</b>			
White, non-Hispanic	1	1	1
Black	0	0	0
Hispanic	25	26	25
Asian	0	0	0
Non-resident	0	0	0
<b>TOTAL</b>	<b>26</b>	<b>27</b>	<b>26</b>
<b>SERVICE/MAINTENANCE</b>			
White, non-Hispanic	1	1	1
Black	0	0	0
Hispanic	10	12	21
Asian	0	0	0
Non-resident	0	0	0
<b>TOTAL</b>	<b>11</b>	<b>13</b>	<b>22</b>